

Scale 10 chs. per. inch.

State of South Carolina,
County of Greenville.

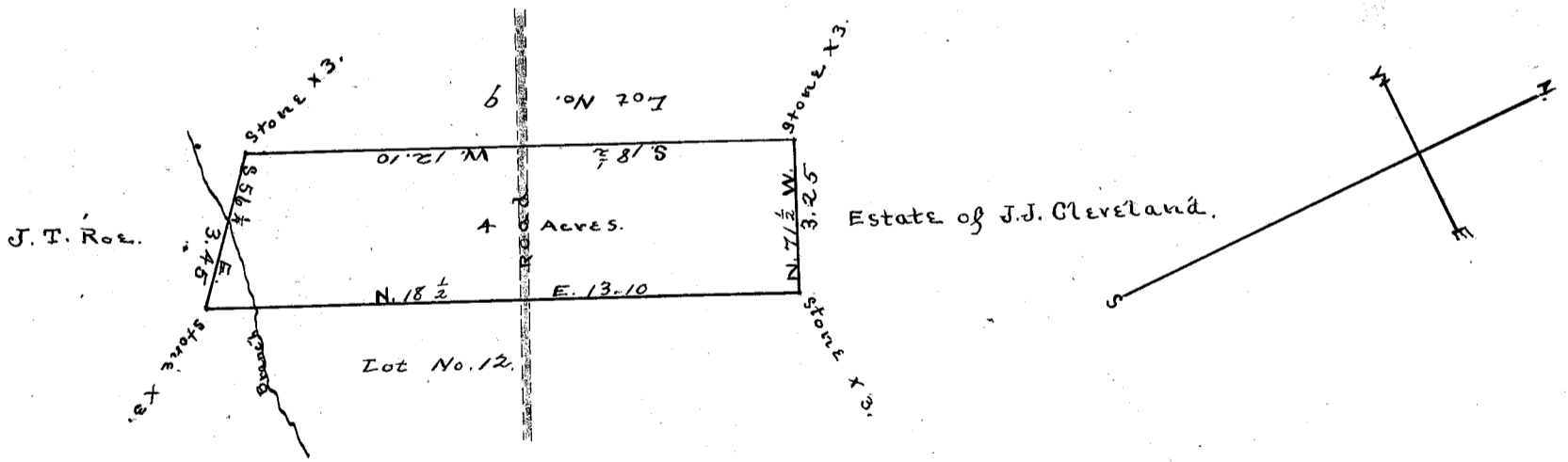
The above map represents in form, marks and boundaries, the land deeded to Sarah Wall by David Cannon, Exor., it being a part of the Larken Cannon, Decd., Tract of land, containing eighty-four (84) acres.

As surveyed and divided by me at the request of said David Cannon, Exor.,
November 31st, 1882.

J.B. Williams, D.S.

Recorded January 6th., 1909.
and Platted by J.B.-----:

301



Scale of 4 chs. per. inch.

State of South Carolina
Greenville County.

pursuant to the request of T.H. Cromer, I, on the 13th, day of July, 1899, surveyed and divided into Twelve (12) lots a certain tract of land for him, situate about 2-1/2 miles S.E. from Piedmont, in the State and County aforesaid, adjoining Rehobeth Church Lot on the Greenville Road; the above plat represents Lots Nos. Ten (10) and Eleven (11) and containing Four (4) acres, having such form, marks and boundaries as thereon represented.

this Jany. 1st, 1909.

Wm. F. Lee,
Surveyor.

Recorded January 6th, 1909,
and Platted by J.B.----: